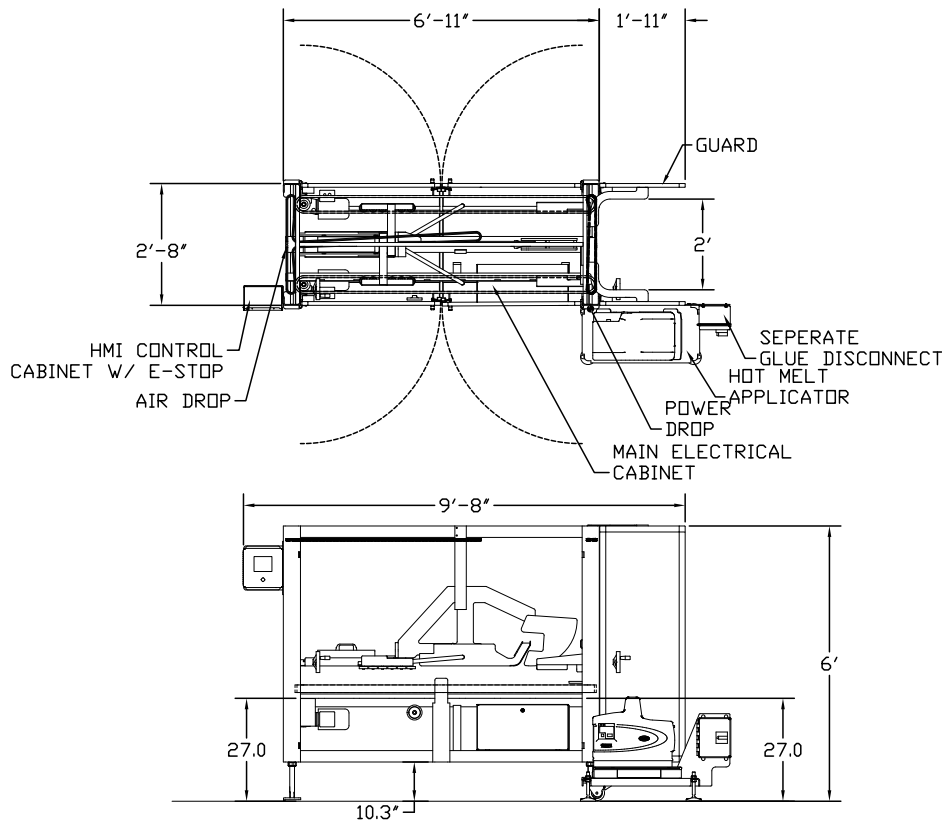


CASE SEALER / GLUE FLOOR PLAN

S20G

CASE SEALER



MACHINE SPECIFICATIONS	
MACHINE VOLTAGE	480V-3PH-60HZ
EST AMP LOAD	17 AMPS @ 480V
MAIN DISCONNECT	30 AMP FUSED 15 AMP
EST GLUE AMP LOAD	5 AMPS @ 480V
GLUE DISCONNECT	30 AMP FUSED 15 AMP
EST AIR USE	TBD SCFM @ 90PSI

NOTE - PRELIMINARY FLOOR PLAN FOR ORIENTATION OF BASE PRICE MACHINE ONLY, DIMENSIONS ARE SUBJECT TO CHANGE ACCORDING TO DESIGN REQUIREMENTS AND OPTIONS PURCHASED

REV.	DATE	REVISED BY	CHANGE DESCRIPTION	REQUESTED BY	APPROVED BY
A	5/30/2018	BLP	RELEASED FOR SALES	AF	AF

DRAWING NAME:		GLUE CASE SEALER FLOOR PLAN			
INSITE PACKAGING AUTOMATION					
DRAWN BY:	CREATION DATE:	SCALE:	PIN 1:	SHEET:	
BLP	05/29/2018	1:24		1 of 1	
PROJECT NO:	DWG. SZ:	DRAWING NO:			
MXXXXXX	C			9616390	

This drawing and the information contained is the sole property of Douglas Machine Inc. It is not to be used, copied, reproduced, or distributed in whole or in part without the prior written consent of Douglas Machine Inc.